

# The Negev

The Challenge of a Desert

Michael Evenari

Leslie Shanan

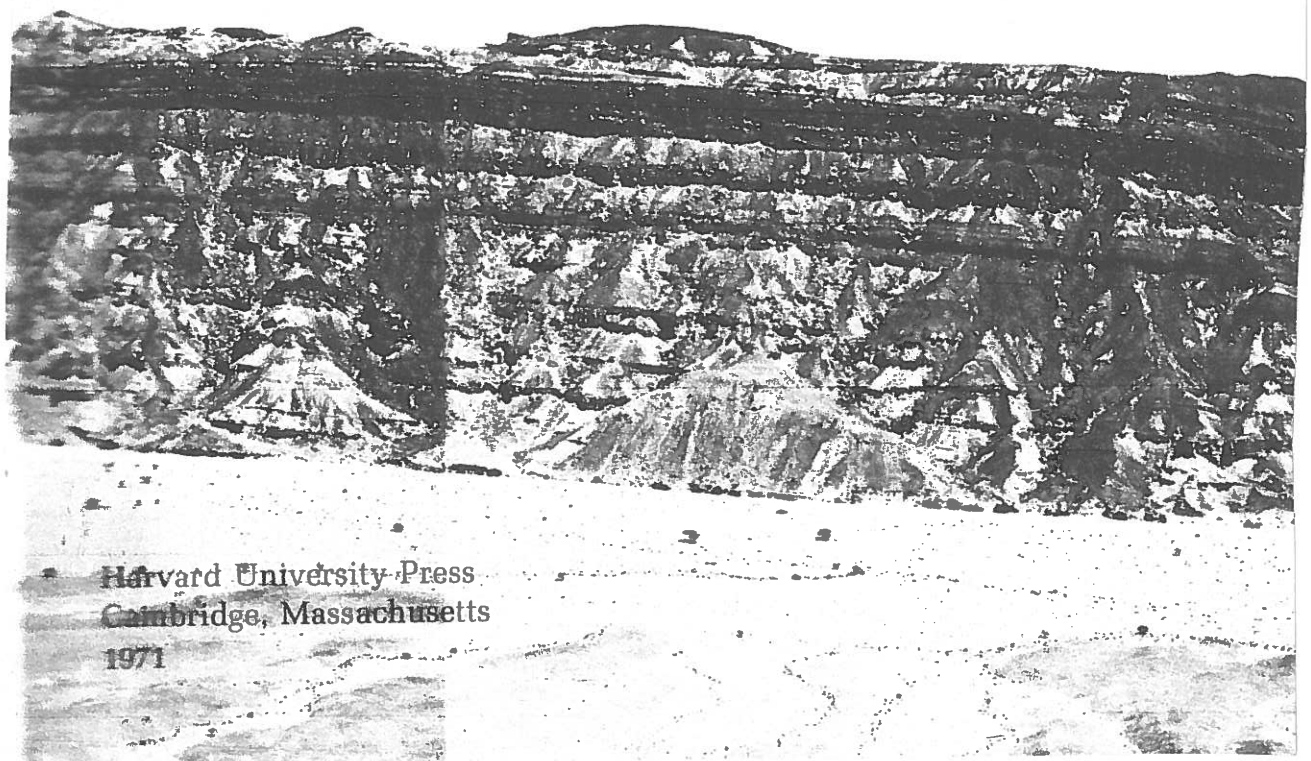
and

Naphtali Tadmor

with chapters by

Yehoshua Itzhaki

and Amiram Shkolnik



Harvard University Press  
Cambridge, Massachusetts  
1971

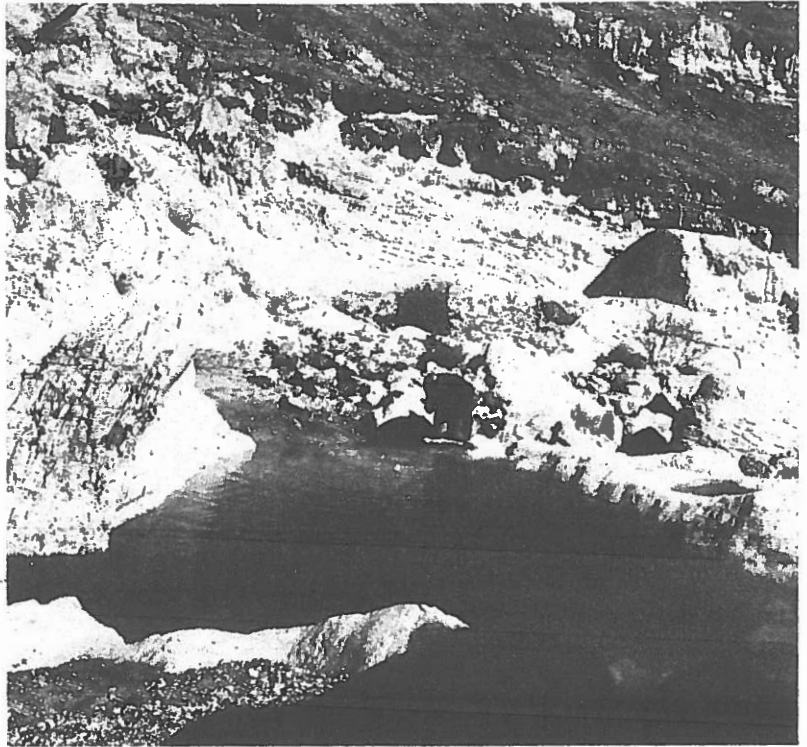


Fig. 96. Natural rock basin filled with flood water.

Fig. 97. Inside of a large rock-hewn cistern. All cracks have been filled with stones; the mortar plaster that once covered these stones is still partly visible.

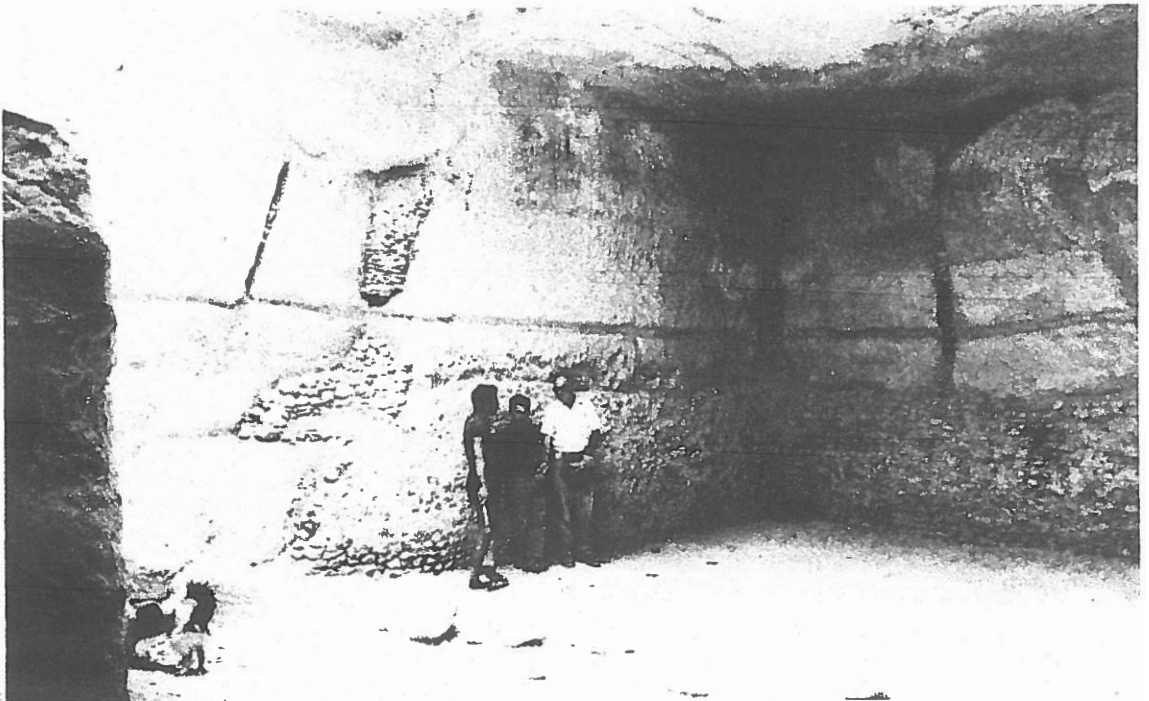


Fig. 111. Aerial photograph of the Avdat farm. In the foreground are four unreconstructed terraces of the ancient farm. The farmhouse is on the hill at the right. Blocks 1-14 can be easily identified (compare Fig. 113). In the background are six reconstructed channels leading runoff from the hills to the various weirs. On the hill to the right of the farmhouse the traces of three unreconstructed channels can be seen. In the background are remains of ancient farms.

